

Home School Day Briefing

Begin your Countdown!

Thank you for scheduling a visit to Space Center Houston's Home School Day! We provide all students with experiences that go beyond "just the facts" and encourage them to investigate the basic concepts behind each exhibit. Please use the accompanying materials to help prepare yourself and your family for your upcoming visit!

We hope that this briefing will answer most of your questions! Read it carefully. Save it for further reference and feel free to bring it with you on your trip!

See you soon!

The Education Crew



Upon Landing

1. Home School Day begins at 10:00a.m. on October 6th, 2010.
2. Before arriving at Space Center Houston review the schedule for the day with your family.
3. If your tickets were not mailed to you, you may pick up your tickets at the Reservations Department
4. Please hand out all tickets to family members before entering the security check point at the entrance to the building.
5. All visitors are subject to search before entering the building. No large bags or personal weapons are allowed inside Space Center Houston.
6. Have a great time! We're sure you'll have a blast!



PREPARE FOR LIFT-OFF



PROGRAM INCLUDES

- ◆ Admission to Home School Day Oct. 6th, 2010
- ◆ Build your very own rockets (from 10am-2pm)
- ◆ FREE GIANT SCREEN Films
- ◆ Guided Tram Tour to Johnson Space Center
- ◆ ROCKET LAUNCH!!
- ◆ NASA's Johnson Space Center Educator Resource Center
- ◆ All NEW Lego Castle Exhibit
- ◆ Current attractions, exhibits, and shows
- ◆ FREE Planetarium Shows (10:30, 11:30, 1:30, 2:30)
- ◆ Great Wall of Physics (10 to 2)
- ◆ Ultimate Science Lab Demonstrations (10:30 and 12:30)
- ◆ Combustion Show (11:00 and 1:00)
- ◆ Planet Hunter (11:30 and 1:30)
- ◆ Exploration Academy Demonstration (11:00 and 2:00)
- ◆ **PLUS—The center is closed to the public on this day!**

PRICES

- ◆ **\$9.95** per person pre-order before **September 28, 2010**
- ◆ **\$11.95** a person on or after **September 28, 2010**
- ◆ FREE admission for children 3 yrs. old and under

Traveling from out of town? Ask about our Home School Overnight!
Email svoprograms@spacecenter.org
or call 281-244-2132

PAYMENT

- ◆ In order to secure your place on the Home School Day, a reservation must be made on or before October 5th, 2010
- ◆ Space Center Houston accepts credit cards, personal checks, money orders, and cashiers checks.
- ◆ All personal checks must be received no later than September 28, 2010.
- ◆ Only credit cards, money orders, and cashiers checks will be accepted after September 28, 2010.
- ◆ Please make payments to Space Center Houston and mail to:
 Space Center Houston
 Attn: Reservations
 1601 NASA Parkway
 Houston, TX 77058

REFUNDS AND CANCELLATIONS

- ◆ No refunds will be issued after September 28, 2010. All Home School tickets are valid on any day Space Center Houston is open, and expire one year from the day the tickets are printed.
- ◆ For refunds and cancellations please contact reservations.

SECURITY

- ◆ Announce prior to the trip, that large bags and personal weapons **WILL NOT BE ALLOWED** inside the center.
- ◆ All participants are subject to a search before they enter the building.

LUNCH

- ◆ Food and beverages may be purchased at the Zero-G Diner at Space Center Houston.
- ◆ You are welcome to bring a picnic lunch. However, outside food is not allowed inside Space Center Houston. Please feel free to use the picnic park area located to the left of the facility.
- ◆ \$7.95 Lunch vouchers may be pre-purchased with tickets. No lunch vouchers will be sold the day of the event.

PARKING

- ◆ Parking on Home School Day is free of charge.
- ◆ Please make sure to tell the parking attendant you are here for Home School Day so you are not charged for parking.

CODE OF CONDUCT

- ◆ In order to participate in Space Center Houston's attractions and exhibits, all children must stay with a parent/guardian at all times regardless of grade level or age.

RESERVATIONS

- ◆ Call **281-283-4755**
- ◆ Email: reservations@spacecenter.org
- ◆ Fill out reservations form and fax to **281-283-4766**



Frequently Asked Questions



Do students and parents need to pay?

Yes, all students, parents, and other family members must pay before entering the building. Each paid adult and student will receive an admission ticket for Home School Day.

*Children 3 years old and under are free of charge.

How long does the Home School Day “tour” take?

The Tram Tour, which takes you over to NASA, takes approximately 90 minutes to complete. Time spent inside Space Center Houston on Home School Day depends on if your family views any giant screen films, live shows, and/or takes the tram tour. Usually 5-6 hours is sufficient, however, we invite you to stay as long as you like!

Can I get scheduled into a specific film time?

All attractions, including films, are on a first come first serve basis. Please make plans to arrive 10-15 minutes before all films or show times.

Can we eat “sack lunches” inside Space Center Houston?

Outside food is not allowed inside the center. We do have a covered picnic park area that can be used for eating your lunches. Lunches should be stored inside of your vehicle until it is time to eat. Another option would be to order lunch vouchers for each member of your family. They are \$7.95 each and you get a choice of hamburger, cheeseburger, grilled chicken sandwich, hot dog, or chicken strips. All come with a drink and fries. Another choice is two slices of pizza and a drink.

Will my family have a tour guide?

The Tram Tour is the only part of Home School Day that will be guided. Touring inside the center is completely self guided. Please use the “Things to See and Do” section of this briefing to plan your day. A map of the center has been included.

Can I make reservations for a specific tram time?

The Tram Tours are on a first come first serve basis. Please make plans to arrive 15-20 minutes before the tour is scheduled to leave.

What forms of payments are accepted?

Space Center Houston accepts credit cards, personal checks, money orders, cashier checks, and cash. All personal checks must be received by September 28, 2010. Please do not mail cash. Only credit cards, money orders and cashier checks will be accepted after September 28, 2010.

When is payment due?

All payment is due by October 5, 2010. There will be no pay on arrival allowed.

Can I get a refund for students unable to attend?

No refunds will be issued after September 28, 2010. To request a refund or cancellation of your visit please contact the reservations department.

Can I add additional students and adults once I have sent payment?

Yes! Additional participants may be added. Please call 281-283-4755.

Where can I get more information?

Make sure to check our website www.spacecenter.org for scavenger hunts and new information about your day!

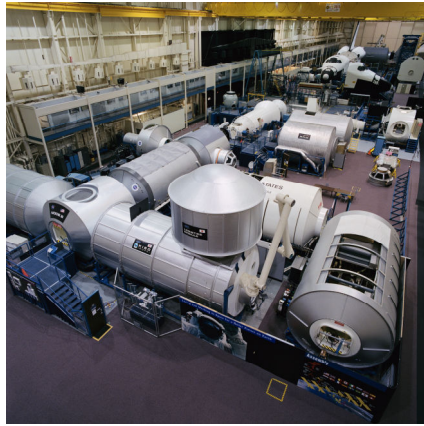


NASA TRAM TOUR

Sponsored by:



Go behind the scenes at Johnson Space Center. Tram tours are approximately 90 minutes and depart every 20-60 minutes.



STARSHIP GALLERY

****Space Center Houston Must See****



See the short film, *On Human Destiny*. Shows start every 30 minutes, beginning at 10:15. See actual spacecraft and touch a real moon rock after the film in the Starship Gallery!

ASTRONAUT GALLERY



See the world's best collection of actual space suits.

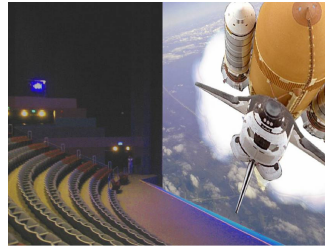
BLAST OFF! THEATER



Experience the "feel" of a real shuttle launch! Following, get briefed on the space program's current events.

Shows start every hour, beginning at 11:00 am.

SPACE CENTER THEATER



To Be an Astronaut shows daily at 10:30, 12:30, 2:30 & 4:30 and lasts 30 minutes.

Inside the Space Station shows daily at 11:30, 1:30 & 3:30 and lasts 50 minutes.

LIVING IN SPACE SHOW



Discover how astronauts work, sleep, eat, exercise and even go to the bathroom in space!

Shows are every hour starting at 11:30 and are approximately 25 minutes.

IMPORTANT NOTES

- All attractions are on a first-come first-served basis.
- All listed show times are typical, but subject to change.
- Check the show schedule on the day of your visit.

All attractions and times are subject to change



More Things to See and Do

KIDS SPACE PLACE & MARTIAN MATRIX



This attraction offers 14 exciting areas with 31 hands-on exhibits!

For the safety of all visitors, students measuring above 56" in height are not allowed inside the Martian Matrix.

SPACE SHUTTLE MOCK-UP

Climb aboard to get a close-up look at the flight deck and mid deck of a space shuttle.

No specific show time. Open continuously under normal conditions.



MORPHIS SIMULATOR RIDE & LUNAR LANDER 2020

- These attractions are available for an additional charge of \$4.00

ULTIMATE SCIENCE LAB DEMONSTRATIONS



View exciting space science demonstrations

COMBUSTION SHOW



Come learn all about Combustion!

PLAZA EXHIBITS

- Don't miss the exciting and interactive plaza exhibits that provide hands-on activities for students and teachers alike. Plaza exhibits make each visit to Space Center Houston unique and change 3 times each year.
- Visit our website for more information: www.spacecenter.org

MANNED MANEUVERING UNIT TRAINER (MMU)



Train like an astronaut as you attempt to retrieve and repair a satellite while maneuvering on an air-bearing floor. No specific show time. Open continuously under normal conditions.

PARTIAL TASK TRAINERS

Test your piloting skills by landing the shuttle orbiter via simulation. No specific show time. Open continuously under normal conditions.



All attractions and times are subject to change

